

DANIELS MANUFACTURING Co.

Phone: 402-387-1891 ~ Toll Free: 800-736-0776

Fax: 402-387-1961

P.O. Box 67 ~ 87725 State Hwy. 7 ~ Ainsworth, NE 69210

Website: www.danielsmfg.com E-Mail: daniels@danielsmfg.com

RETAIL PRICE LIST



Located in the Sandhills of Nebraska, Daniels Manufacturing Co. has been manufacturing the world's finest livestock handling equipment since 1958.

Priding ourselves in staying on the cutting edge of the livestock handling equipment design and manufacturing. In the past three years, we have sold equipment in eight countries around the world and will continue to offer bold and revolutionary new products relating to livestock, their care, and processing.

As always, all of our products come with a Limited Warranty.

Due to high demand of facility drawings and changes to customer plans, we will be charging a fee for ALL CAD drawings, consulting, and travel expenses.

All designs, drawings, and pictures are the sole property of Daniels Manufacturing Co. and reproduction is strictly prohibited. If our designs or drawings are incorporated into your facility and equipment is purchased or installed, this fee will be waived.

Daniels Manufacturing Co.

In This Year's Catalog, You Will Find...

Low Stress Cattle Handling Information.....	Page 2
Panels, Gates, and Accessories.....	Page 3
Arch Gates and Portable Corral Accessories.....	Page 4
Portable Corrals, Loading Chutes, and Panel Carriers.....	Page 5
Portable Panel Processing Systems.....	Page 6
Continuous Fencing and Feeding Systems.....	Page 7
Windbreaks.....	Page 8
Calving Barns and Accessories.....	Page 9
Horse Barns and Garages.....	Page 10
Windmill Towers and Accessories, Clotheslines, and Sprinklers.....	Page 11
Hydraulic Squeeze Chute.....	Pages 12 & 13
Portable Alleyways.....	Page 14
Stationary Alleyways.....	Page 15
Side Exit Alley, Transition Cages, and 5-Way Sort.....	Page 16
Feedyard Duty Loading Chute and Equipment.....	Page 17

**100%
Made
In The
USA**

- Call Today For A FREE DVD Of All Daniels Manufacturing Co. Products -

The Bud Box and Low Stress Cattle Handling Information

In the feedlot industry today, we are challenged with an increased rate of musculoskeletal injuries that occur as a result of poor facility design and mishandling of the cattle.

As we move forward our cow/calf and feedlot industries are becoming more aware and prioritizing the animal's well being and care of cattle.

Daniels Manufacturing Co. of Ainsworth, Nebraska has been a progressive and innovative designer of livestock handling facilities across the United States, Australia, Canada, and Europe.

In the U.S, we have designed facilities for Cactus Feeders, Cargill Feedlots, Timmerman Feedlots, and many other feeding operations in South Dakota, Nebraska, Colorado, Kansas, Oklahoma, and Texas.

Danny Daniels, owner of Daniels Manufacturing Company, has attended several Bud Williams Stockmanship Schools on the training of low stress handling of cattle and has sought advice from Bud Williams himself as well as several other animal specialists.

Dr. Tom Noffsinger, Dr. Lynn Locatelli, Dr. Kip Lukasiewicz, Curt Pate, and several others have assisted Danny in the design of facilities to take advantage of voluntary cattle flow.

When designing facilities, Danny Daniels or Dr. Kip Lukasiewicz make personal visits to look the area over and then design the facility to the normal flow of cattle movement. They utilize open facilities and a Bud Box to aid in the voluntary flow of cattle into their double working alley and hydraulic squeeze chute, which are also designed to reduce potential injury to cattle.

While many snake alleys are V-floored and curved, Daniels alleys are straight with adjustable sides (manual or hydraulic). This design is centered around the normal instincts of the animal, which is to go in straight lines and allow them to walk with a normal base.

Cattle also like to see what is pressuring them. The Bud Box and Double Alley are designed with open sides to allow cattle to see the handler and react to their position and movement.

The hydraulic chute has been upgraded several times to incorporate the ideas from many handling experts. It is by far the quietest and most user friendly chute on the market. With its unique squeeze design, neck extenders, and convenient hydraulic operating system, the Daniels squeeze chute is the best on the market.

Please call Daniels Manufacturing Company, Dr. Tom Noffsinger, or Dr. Kip Lukasiewicz with any question you may have on future facility design.

Portable Cattle Panels & Accessories

High Tensile Strength Tubing



5 Feet High Livestock Panels

Length	CP-2		CP-2 HBB	
	Wt.	Price	Wt.	Price
8' 4"	77.....	\$168 ⁰⁰	108.....	\$235 ⁰⁰
10' 4"	86.....	\$188 ⁰⁰	126.....	\$261 ⁰⁰
12'	96.....	\$211 ⁰⁰	155.....	\$306 ⁰⁰
14'	112.....	\$241 ⁰⁰	168.....	\$332 ⁰⁰
16'	128.....	\$272 ⁰⁰	197.....	\$376 ⁰⁰

CP-5 Connector Pin.....\$7⁷⁵

*Special Built Buffalo Panels
6' Tall - 7 bars - Built By Order Only*

CP-1 Gates - 52" High

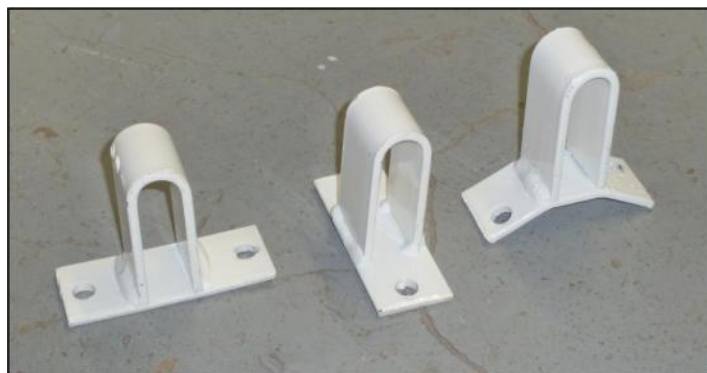
Opening	CP-1		CP-1 x HBB	
	Wt.	Price	Wt.	Price
2 1/2'	25.....	\$89 ⁰⁰	*39.....	\$116 ⁰⁰
3'	28.....	\$95 ⁰⁰	*44.....	\$130 ⁰⁰
4'	35.....	\$106 ⁰⁰	*68.....	\$148 ⁰⁰
6'	53.....	\$135 ⁰⁰	78.....	\$200 ⁰⁰
8'	66.....	\$162 ⁰⁰	97.....	\$218 ⁰⁰
10'	80.....	\$179 ⁰⁰	117.....	\$246 ⁰⁰
12'	93.....	\$201 ⁰⁰	146.....	\$295 ⁰⁰
14'	110.....	\$238 ⁰⁰	159.....	\$316 ⁰⁰
16'	123.....	\$272 ⁰⁰	178.....	\$364 ⁰⁰
18'	138.....	\$316 ⁰⁰	*199.....	\$413 ⁰⁰
20'	153.....	\$362 ⁰⁰	*220.....	\$471 ⁰⁰

*Built by Order Only - Not Stock Item!

Heavy Frame, Butt,
and Bottom Bar

Mounting Bracket of Your Choice

Furnished With Gates



Wood Post
Round
Bracket



Flat Wall
Mount
T Bracket



Square Post
Y
Bracket



Steel Pipe Post
Weld On
Bracket

All Mounting Brackets.....\$5⁹⁰ Ea.

Panel Loops.....\$2⁸⁵ Each
Plank Mount (horizontal or vertical) or Round Post Mount



Weld On Loop
For Steel Post
\$1²⁰

Retractable Pull Pin

Can be added to
any gate when
you order

\$24⁰⁰



Posts

4 1/2" O.D. x 8' x 1/4" Wall

Steel Post.....\$104⁵⁰

2 7/8" O.D. x 8' x 1/4" Wall

Drill Stem Post.....\$75⁰⁰



Gate Latches

GL-3 (right) & GL-4 (left).....\$38⁵⁰

GL-2 Latch (both).....\$43⁰⁰



Gate Closers

For Wire Gates...
Will not drop gate if
wire breaks or hook
comes loose

\$17⁵⁰

Gates & Combos

High Tensile Strength Tubing

Arch Gates



32".....	Wt. 90 lbs.	\$277 ⁰⁰
4'.....	Wt. 105 lbs.	\$302 ⁰⁰
6'.....	Wt. 120 lbs.	\$328 ⁰⁰
8'.....	Wt. 135 lbs.	\$350 ⁰⁰
10'.....	Wt. 155 lbs.	\$369 ⁰⁰

We recommend standard weight CP-1 Gates only. X-Heavy gates by special order.

Transition Cage



Provides Ability to Sort Two Ways
\$880⁰⁰

Low Level Frame Gates



32".....	Wt. 92 lbs.	\$306 ⁰⁰	8'.....	Wt. 154 lbs.	\$384 ⁰⁰
4'.....	Wt. 107 lbs.	\$333 ⁰⁰	10.....	Wt. 175 lbs.	\$406 ⁰⁰
6'.....	Wt. 132 lbs.	\$359 ⁰⁰			

Panel Gate Combo With Any Size Gate



10'.....	Wt. 191 lbs.	\$487 ⁰⁰	14'.....	Wt. 220 lbs.	\$535 ⁰⁰
12'.....	Wt. 202 lbs.	\$504 ⁰⁰	16'.....	Wt. 241 lbs.	\$613 ⁰⁰

- Build By Order Only -

"Easy Access"

Horse Handle

Our Horse Handles
can be added to any
gate.

\$45⁰⁰



260 to 325 Cow Corral Unit with 322 Feet of Panel Fence

Complete Corral Unit

Wt. 4,171 lbs.

\$11,270⁰⁰

Complete Corral Unit

Less Chute

Wt. 2,881 lbs.

\$6,015⁰⁰

Model A Portable

Chute with

Torsion Axle

Wt. 1,760 lbs.

\$5,265⁰⁰

Prices Do Not Include Panel Trailer

Price Includes

- 20 - 14' CP-2 Panels..... @..... \$241⁰⁰
- 2 - 8' Arch Gates..... @..... \$350⁰⁰
- 1 - 32' Arch Gate..... @..... \$277⁰⁰
- 30 - CP-5 Pins..... @..... \$7⁷⁵
- 1 - Model A Chute..... @..... \$5,260⁰⁰



Entire corral loads easily into 12' x 38' chute for easy transportation. Chute adjusts from 26 inches to 52 inches in height for ease in loading or unloading at any level. This chute is equipped with torsion axle, radial tires, fenders, mud flaps, tongue that swings sideways out of way, jack, built in rear gate, and extension hangers to allow a dozen extra panels or a working alley to be hauled. All stationary and portable chutes have the new Rumber flooring.



**New
Rumber
Flooring!**

Stationary Loading Chute

18' Length

\$6,175⁰⁰



Bumper Hitch Panel Carrier.....\$4,000⁰⁰

With Tandem Axles - Holds 40 Panels

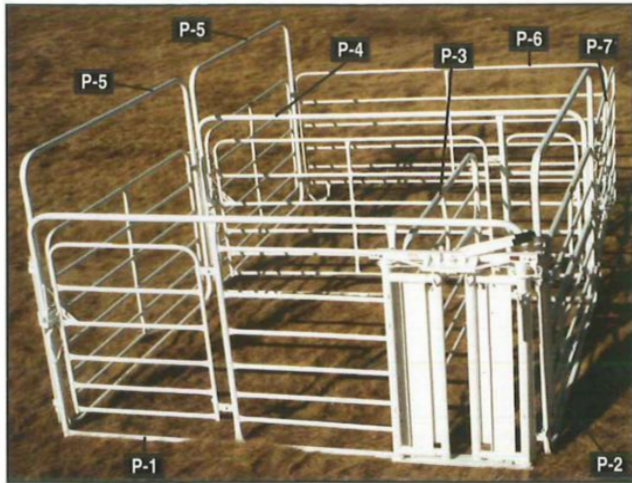
Wt. 1,080 lbs.



Gooseneck Panel Carrier.....\$6,325⁰⁰

With Tandem Axles - Holds 50 Panels

Build Your Own Alleyway



Portable Pulling Alley

P-1	Pearson Headgate w/11' Panel.....	\$1,405 ⁰⁰
P-2	7' 9" L.H. Nurse Gate in Arch.....	\$511 ⁰⁰
P-3	7' 9" Nurse Gate.....	\$364 ⁰⁰
P-4	11' Panel - With 2' Gate Instead of Head Catch.....	\$567 ⁰⁰
P-5	8' Arch Gate.....	\$350 ⁰⁰
P-6	11' Divider Panel.....	\$210 ⁰⁰
P-7	8' CP-2 Panel.....	\$166 ⁰⁰
	CP-5 Connector Pin.....	\$7 ⁷⁵

Select the panels you need to set up a pulling alley in the barn or out in your calving lot. Will fit in with all Daniels panels.



Hog, Sheep, & Calf Pens...Call For Pricing!



Figure 7-1 - 14' x 5' Alley Panel.....	Wt. 215 Lbs.	\$425 ⁰⁰
- 12' x 5' Alley Panel.....	Wt. 185 Lbs.	\$389 ⁰⁰
- 10' x 5' Alley Panel.....	Wt. 155 Lbs.	\$351 ⁰⁰
- 8' x 5' Alley Panel.....	Wt. 125 Lbs.	\$299 ⁰⁰
Figure 7-2 - No Back - (For Use With Portable Alley).....		\$150 ⁰⁰
Figure 7-3 - Palpation Cage.....	Wt. 170 Lbs.	\$670 ⁰⁰
Figure 7-4 - Adjustable Arch - (No Gate).....	Wt. 50 Lbs.	\$144 ⁰⁰
Figure 7-5 - Adjustable Arch with Side Hinge Gate.....	Wt. 75 Lbs.	\$359 ⁰⁰
Figure 7-6 - 32" Slide Adjustable Arch Gate.....		\$709 ⁰⁰
Figure 7-7 - 16' CP-2 Panel.....	Wt. 128 Lbs.	\$272 ⁰⁰
Figure 7-8 - 14' CP-2 panel - (3 shown).....	Wt. 112 Lbs.	\$241 ⁰⁰
Figure 7-9 - 10' Arch Gate.....	Wt. 155 Lbs.	\$369 ⁰⁰
Pearson Headgate - (Not Shown).....	Wt. 200 Lbs.	\$840 ⁰⁰
Pearson Adapter Arch - (Not Shown).....		\$276 ⁰⁰



White Continuous Fence

Pipe.....\$2¹⁰ Per Foot - Per Pipe

Continuous Fence Pipe Lengths Are 24' 3"

3" Crimp On One End For Telescoping Connection

Corners.....\$4⁹⁰ Each

Starting & Ending Section.....\$22⁵⁰ Each

(For a 6 Pipe and Under Fence)

Clips and Lag Screws N/C on An 8' Post Spacing

Example: 6 Bar High Painted White \$12⁶⁰ a Running Foot x _____ + Post = Total

Livestock Feeding Items



Telescoping Bale & Loose Hay Feeder

The 7' x 14' sides work in as livestock eats. Ranchers say cattle waste much less hay with this feeder than others they use. Panels can be used for portable corral panels in off season.

7' x 14' Rack Complete.....\$915⁰⁰

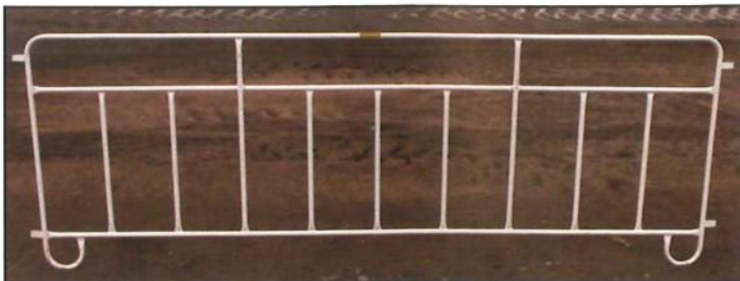
7' Panel Only.....\$169⁰⁰

10' Panel Only - By Order Only.....\$205⁰⁰

14' Panel Only.....\$289⁰⁰

16' Panel Only - By Order Only.....\$318⁰⁰

20' Panel Only - By Order Only.....\$409⁰⁰



14' Creep Feed Panel.....\$287⁰⁰

Windbreaks



From Windbreak...

- In Just 5 Minutes
- One Person
- No Tools
- No Bolts

To Shade!

In the tests we've run, this panel stops over 95% of the wind velocity and snow does not swirl over the top like a solid windbreak. Cattle will not drift away from protection.

- *Heat Flows Up Through Holes*
- *Stops 79% of Sun*

Stationary Windbreak Panel.....\$640⁰⁰

Bare Post.....\$139⁰⁰

Post With Shade Latch.....\$190⁰⁰

Cost of 60' Stationary Windbreak.....\$6,580⁰⁰

8 Panels in a 60' Section

Posts are 4 1/2" O.D. with 1/4" Wall



The outside frame of these panels is made of 1 1/2" x 3" x 14 gauge tube. The 21% perforated sheets are 20 gauge galvanized-punched full of 1 5/8" holes and corrugated to 3".

Weight per 12' sheet is 54 lbs. - 7' x 12' complete panel weight is 225 lbs.



Portable Windbreak Panel.....\$605⁰⁰

The windbreak panel will hook-up to the Daniels livestock buildings and all of our portable livestock panels. The windbreak panels can be set up in an open area or around a building for added protection.

Barns and Sheds

Calving Barns

*Tack Rooms Built
In On Request*



Size

32' x 24' Totally Enclosed	- 6 Pens.....
32' x 32' Totally Enclosed	- 8 Pens.....
32' x 40' Totally Enclosed	- 10 Pens.....
32' x 48' Totally Enclosed	- 12 Pens.....
32' x 56' Totally Enclosed	- 14 Pens.....

Barn Bare Shelter

\$19,610 ⁰⁰
\$23,136 ⁰⁰
\$27,535 ⁰⁰
\$31,500 ⁰⁰
\$36,326 ⁰⁰

Barn With Gates & Panels

\$23,235 ⁰⁰
\$27,417 ⁰⁰
\$32,625 ⁰⁰
\$37,325 ⁰⁰
\$43,047 ⁰⁰

Barn Complete*

\$25,369 ⁰⁰
\$29,553 ⁰⁰
\$34,763 ⁰⁰
\$39,460 ⁰⁰
\$45,182 ⁰⁰



Size

12' x 24' Open Front	- 3 Pens.....
12' x 32' Open Front	- 4 Pens.....
12' x 40' Open Front	- 5 Pens.....
12' x 48' Open Front	- 6 Pens.....
12' x 56' Open Front	- 7 Pens.....

Barn Bare Shelter

\$7,703 ⁰⁰
\$9,220 ⁰⁰
\$11,170 ⁰⁰
\$12,905 ⁰⁰
\$15,068 ⁰⁰

Barn With Gates & Panels

\$9,384 ⁰⁰
\$11,562 ⁰⁰
\$14,042 ⁰⁰
\$16,337 ⁰⁰
\$19,075 ⁰⁰

Barn Complete*

\$11,520 ⁰⁰
\$13,663 ⁰⁰
\$16,180 ⁰⁰
\$18,475 ⁰⁰
\$21,212 ⁰⁰

***Complete Barn Package** - Includes pulling alley made up of Pearson automatic head gate, 2 nurse panels, and 2 special divider panels with extra gates. This packages is \$2,065⁰⁰ over and above the price of any barn equipped with gates and panels.

These panels are specifically designed for calving barns.



Pearson Headgate w/11' Panel.....	\$1,405 ⁰⁰
11' Panel.....	\$567 ⁰⁰
With 2' Gate Instead of Head Catch	
11' Divider Panel.....	\$210 ⁰⁰



C-Section Nurse Gate	Wt. 140 lbs.	\$510 ⁰⁰
7' 9" L.H. Nurse Gate	Wt. 130 lbs.	\$364 ⁰⁰
<i>For Calving Barns - Bottom Folds Up Out of the Way</i>		
10' Nurse Gate.....	Wt. 120 lbs.	\$468 ⁰⁰
7' 9" L.H. Nurse Gate in Arch	Wt. 135 lbs.	\$511 ⁰⁰

Left & Right Hand Nurse Gates Available

Barns and Buildings



New Calf Barn with Windbreak Panels

*Windbreaks fold right up to the building. Extended windbreaks give a total of 56' of wind block!
Call for Pricing of Buildings with Windbreak Panels.*

The Thoroughbred Horse Shelter

Designed for horse shelter. 16' x 24' including 4' overhand. 7' 5 1/2" Back Wall & 9' 5 1/2" Peak

Size	Bare	12' x 12' Pen Gate & Panel	Size	Bare	8' x 12' Pen Gate & Panel
16' x 12' Open Front - 1 Pen	\$5,838 ⁰⁰	\$6,915 ⁰⁰	16' x 24' Open Front - 3 Pens.....	\$9,466 ⁰⁰	\$11,219 ⁰⁰
16' x 24' Open Front - 2 Pens.....	\$9,410 ⁰⁰	\$11,149 ⁰⁰	16' x 32' Open Front - 4 Pens.....	\$10,799 ⁰⁰	\$12,813 ⁰⁰
16' x 36' Open Front - 3 Pens.....	\$12,982 ⁰⁰	\$16,077 ⁰⁰	16' x 40' Open Front - 5 Pens.....	\$14,268 ⁰⁰	\$16,892 ⁰⁰
16' x 48' Open Front - 4 Pens.....	\$16,551 ⁰⁰	\$19,613 ⁰⁰	16' x 48' Open Front - 6 Pens.....	\$16,672 ⁰⁰	\$20,177 ⁰⁰
			16' x 56' Open Front - 7 Pens.....	\$18,905 ⁰⁰	\$23,426 ⁰⁰

Horse Barn

Specifically built
to your
sizes and needs.

Prices on Request



Processing Barn

Custom built
to your needs.

Prices on Request

Garages

All specially built

Prices on Request



Windmill Items - Clothes Line - Sprinklers



Windmill Towers

16' Windmill Tower - Includes Platform, Crown, Shutoff, & Anchors	\$1,109⁰⁰
24' Windmill Tower - Includes Platform, Crown, Shutoff, & Anchors	\$1,330⁰⁰
Windmill Platforms	\$123⁰⁰
Windmill Crowns	\$101⁰⁰
10' Windmill Adapter	\$125⁰⁰

Pump Rods



Will Fit Aermotor Mills

Easy Slack Adjustment, Sealed Swivel - Greased Fitted

6' Mill - Standard Length	\$49⁵⁰
8' Mill - Standard Length	\$55⁵⁰
6' Mill - 2' Longer Than Regular Length	\$57⁵⁰
8' Mill - 2' Longer Than Regular Length	\$62⁵⁰



Windmill Shut Off Levers

Furnished With Daniels Towers Or Will Mount On Any Tower
\$25⁷⁵



Clothes Line.....\$385⁰⁰

All lines Tighten Evenly

8' x 12' = 120' Of Line



Sprinklers

The Only Sprinkler You'll Ever Have to Buy

- Hot Dip Galvanized Steel
- Heavy Brass Hose Fitting
- Senninger Standard-Angle Wobbler Sprinkler Head
- Will Put 1/2" of Water on 50' in 5 Hours at 35 PSI

Red Short

\$33⁵⁰

Red Medium

\$41⁰⁰

Red Tall

\$52⁵⁰



AH

All Hydraulic Squeeze Chute

Available Styles

Call for Options

Feedlot Style Squeeze Chute

Stationary Squeeze Chute

Portable Squeeze Chute

Features Include:

- Neck Stretcher for tagging, dehorning, checking teeth, doctoring eyes, etc.
- Sternum Support so cattle can't go down (Adjustable and Removable)
- Built in Palpation Cage with gas springs on gates (No latches to rattle)(10' only)
- Mounting Brackets for attachment of scales
- Special Traction floor with offset 1 1/4" solid round to avoid slipping
- 8-Bolt Hub and Wheel for portable model
- Hip Squeeze for A-I and Preg Checking (Adjustable and Removable) **Option Only**



10' Feedlot Style AH Stationary Squeeze Chute



*10' AH Portable Squeeze Chute
Entire Chute Measures 11' 8 1/2" Long*



**18 Month
Limited Warranty
on All AH All
Hydraulic Squeeze
Chutes**

New Improved Neck Stretcher!



8' and 10' AH Squeeze Chute Inside Measurements

- Inside frame measures 6' 4" Tall
- Squeeze adjusts from 9 1/2" to 33"
- From headgate to front of PP gate 92"
- Headgate closes to 4" and opens to 32"
- Sternum support adjusts from 11" to 20" in height
- 20" Opening for shoulder branding & neck vaccinating



Hydraulic Power Units *Stationary or Portable*

Power Unit Options:

Electric - Open Center.....	\$2,665 ⁰⁰
Electric - Closed Center.....	\$3,200 ⁰⁰
Gas - Open Center.....	\$4,100 ⁰⁰

Control Options:

Standard spool valves included in base price.
Electric valves with hard-wired control or radio control.

Call For Pricing on Electric Over Hydraulic



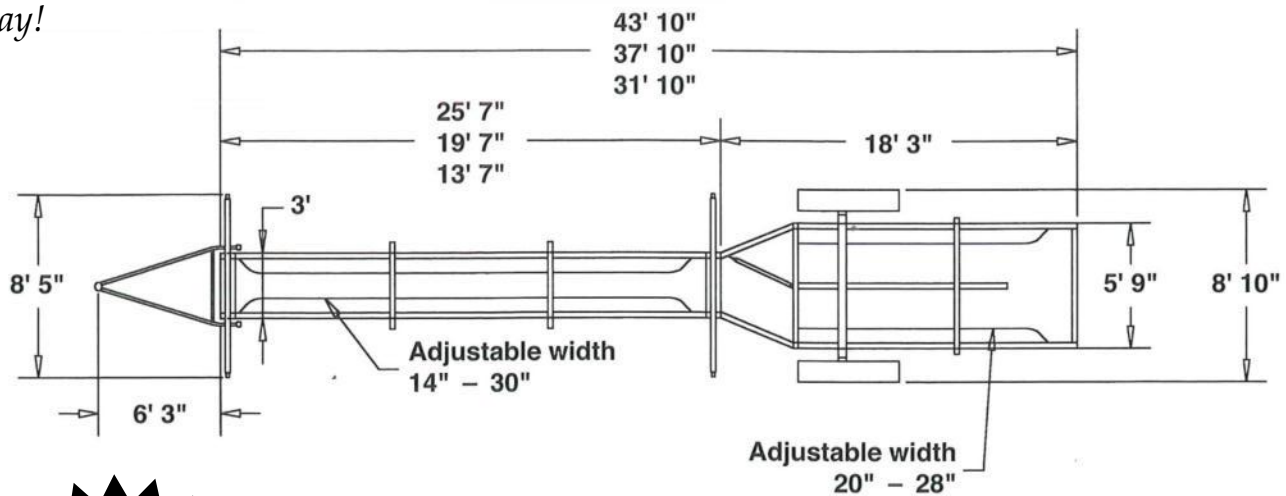
Portable Alleyway

Our Portable Alleyway is the fastest, easiest, and safest way to process cattle in a straight line!



32' - \$17,325⁰⁰ 38' - \$19,250⁰⁰ 44' - \$20,900⁰⁰

The latest version of our Portable Alley features a side swing goosneck hitch for quick and easy setup. It also includes no-backs and side squeezes that are adjustable and undated heavy duty spring loaded jacks that operate simultaneously. With the addition of brass bushings to hinge points, this is undoubtedly the quietest alley produced in the market today!



**New
Quieter
Operation!**

All hinge points and moving parts now have oil impregnated brass bushings to reduce noise levels and increase longevity!

Stationary Alleyway



Our Stationary Alleyway is the fastest, easiest, and safest way to process cattle in a straight line!

32' - \$12,000⁰⁰

38' - \$13,650⁰⁰

44' - \$15,200⁰⁰

Optional Alleyway Equipment

Headgate (No Slide Gate)..... \$1,051⁰⁰

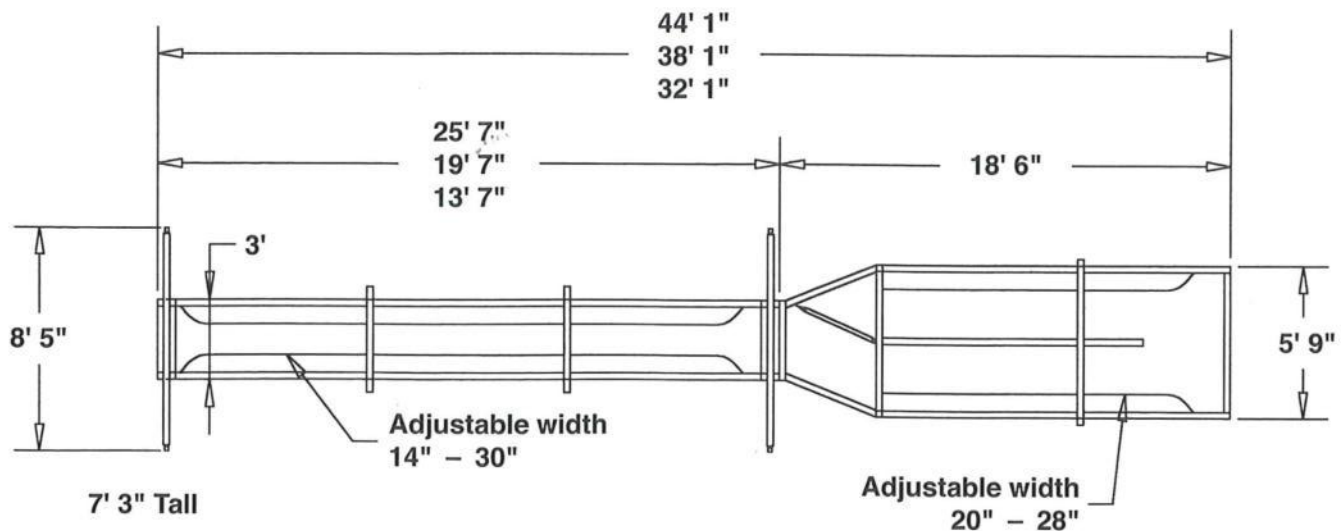
Palpation Cage (Stationary Only)..... \$769⁰⁰

Back Gate in Alley (Not Shown)..... \$292⁰⁰

Travel Lights (Portable Only)..... \$500⁰⁰

Portable Bud Box For Alleyway..... \$3,360⁰⁰

Call For Prices On Converting Alleys To Hydraulic Operation!





**New
Item!**

Side Exit Alley

SIDE EXIT ALLEY PRICING

10' Single Alley.....	\$5,600 ⁰⁰
Headgate.....	\$1,056 ⁰⁰
Palpation Cage.....	\$790 ⁰⁰
Slide Gate.....	\$1,300 ⁰⁰

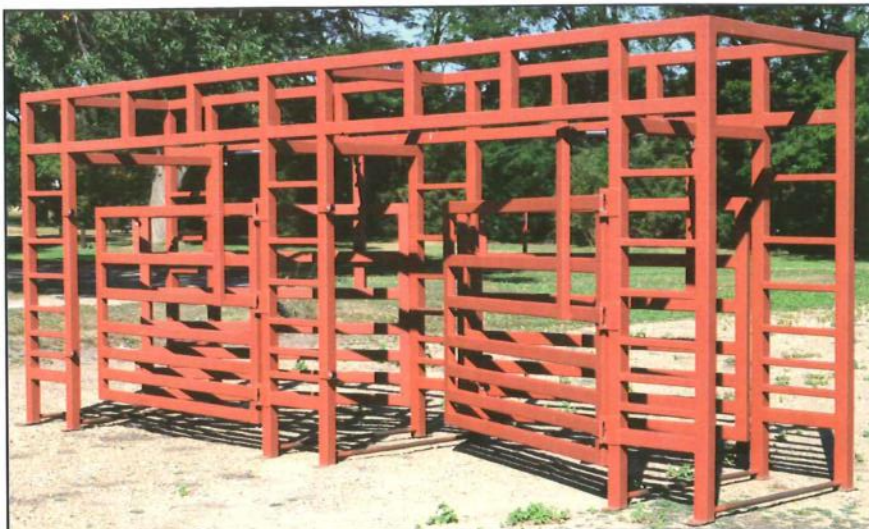
Load Out Transition

Designed For Semi and Horse
Trailer Load Out

\$2,100⁰⁰

*Also Available...
Adjustable Transition
For Processing!*

Pictured In Front of Big Red Loading Chute



Sorting Alleys

Can either be manual,
hydraulic, or electric over
hydraulic.

***Unlimited Exits For
Sorting Alley Options!***

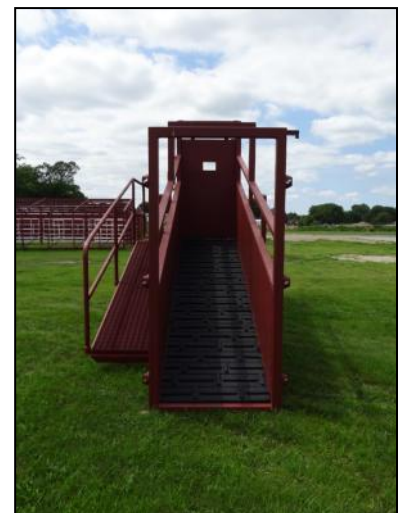
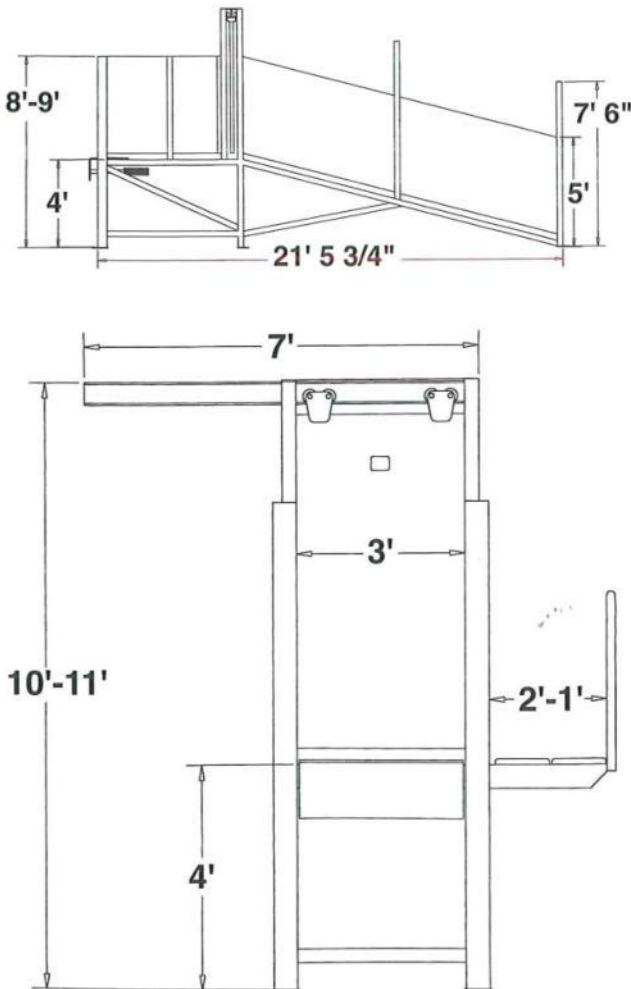
Pictured is a Five-Way Sorting Alley

Feedyard Duty Loading Chute



We have taken the Daniels reputation for durability and reliability to the feeding industry with our new chute. This chute features a wider catwalk, side access door on the top deck, sliding gate at the top of the ramp, and a heavy duty, spring loaded bump plate. This chute utilizes Rumber flooring for greater grip and less chance of injury. We believe that this chute is built to handle many years of heavy duty use and as always comes with out 100% satisfaction guarantee.

Daniels Manufacturing Co.



Loading Chute

\$13,300⁰⁰

Double Alley Back For Loading Chute

\$3,680⁰⁰

Portable Bud Box

\$3,360⁰⁰

Stationary Bud Box

\$6,150⁰⁰

K-State Facility

This complete research livestock facility was built for the Kansas State University during the summer of 2009. Daniels Manufacturing Co. and Dr. Kip Lukasiewicz designed and manufactured all equipment used in this facility.

The building was designed by Daniels Manufacturing Co. and installed by Green Gable Contracting. The K-State Facility covers 10 acres.



Be Sure to Visit Our

North Display Lot

Located Along
Highway 20 in Ainsworth, Nebraska



This image shows a single sheet of white paper with horizontal ruling lines. The lines are evenly spaced and run across the width of the page. There are no margins, text, or other markings on the paper.