

DANIELS MANUFACTURING Co.

Phone: 402-387-1891 ~ Toll Free: 800-736-0776

Fax: 402-387-1961

P.O. Box 67 ~ 87725 State Hwy. 7 ~ Ainsworth, NE 69210

Website: www.danielsmfg.com E-Mail: daniels@danielsmfg.com



Located in the Sandhills of Nebraska, Daniels Manufacturing Co. has been manufacturing the world's finest livestock handling equipment since 1958.

Priding ourselves in staying on the cutting edge of the livestock handling equipment design and manufacturing. We will continue to offer bold and revolutionary new products relating to livestock, their care, and processing.

Due to high demand of facility drawings and changes to customer plans, we will be charging a fee for ALL CAD drawings, consulting, and travel expenses.

All designs, drawings, and pictures are the sole property of Daniels Manufacturing Co. and reproduction is strictly prohibited. If our designs or drawings are incorporated into your facility and equipment is purchased or installed, this fee will be waived.

As always, all of our products come with a Limited Warranty.

Low Stress Cattle Handling Mission.....	Page 2
Portable Cattle Panels and Accessories.....	Page 3
Arch Gates and Combos.....	Page 4
Portable Corrals, Loading Chutes, and Panel Carriers.....	Page 5
Portable Panel Processing Systems (Build Your Own Alleyway).....	Page 6
Continuous Fencing and Feeding Systems.....	Page 7
Windbreaks.....	Page 8
Calving Barns and Accessories.....	Page 9
Horse Barns and Garages.....	Page 10
Windmill Towers and Accessories, Clotheslines, and Sprinklers.....	Page 11
Hydraulic Squeeze Chute.....	Pages 12 & 13
Portable Alleyways.....	Page 14
Stationary Alleyways.....	Page 15
Custom Low Stress Facility Design.....	Page 16
Feedyard Duty Loading Chute and Equipment.....	Page 17
Side Exit Alley, Transition Cages, and 5-Way Sort.....	Page 18

**100%
Made
In The
USA**

Low Stress Cattle Handling Mission

In the feedlot industry today, we are challenged with an increased rate of musculoskeletal injuries that occur as a result of poor facility design and mishandling of the cattle. As we move forward our cow/calf and feedlot industries are becoming more aware and prioritizing the animal's well-being and care of cattle.

Daniels Manufacturing Co. of Ainsworth, Nebraska has been a progressive and innovative designer of livestock handling facilities across the world. Australia, Canada, South Africa and Europe are among some of the locations outside of the U.S. In the U.S, we have designed facilities for the top 20 cattle producers in the industry, and many other feeding operations.

Selecting the right equipment, is vital to the well-being of the livestock. While many snake alleys are V-floored and curved, Daniels alleys are straight with adjustable sides (manual or hydraulic). This design is centered around the normal instincts of the animal, which is to go in straight lines and allow them to walk with a normal base. Cattle also like to see what is pressuring them.

The Bud Box and Double Alley are designed with open sides to allow cattle to see the handler and react to their position and movement. The hydraulic chute has been upgraded several times to incorporate the ideas from many handling experts. It is by far the quietest and most user-friendly chute on the market. With its unique squeeze design, neck extenders, and convenient hydraulic operating system, the Daniels squeeze chute is the best on the market.

*Thank you to everyone who has supported us through the years!
We are proud to be a family owned business
that puts the needs of our customers first.*

*We look forward to working with our current customers
and new ones for many more years to come.*

Portable Cattle Panels & Accessories

High Tensile Strength Tubing



5 Feet High Livestock Panels

Length	CP-2		CP-2 HBB	
	Wt.	Price	Wt.	Price
8' 4"	77.....	\$236 ⁰⁰	108.....	\$328 ⁰⁰
10' 4"	86.....	\$262 ⁰⁰	126.....	\$363 ⁰⁰
12'	96.....	\$294 ⁰⁰	155.....	\$428 ⁰⁰
14'	112.....	\$336 ⁰⁰	168.....	\$462 ⁰⁰
16'	128.....	\$380 ⁰⁰	197.....	\$561 ⁰⁰

CP-5 Connector Pin.....\$11⁵⁰

*Special Built Buffalo Panels
6' Tall - 7 bars - Built By Order Only*

CP-1 Gates - 52" High

Opening	CP-1		CP-1 x HBB	
	Wt.	Price	Wt.	Price
2 1/2'	25.....	\$124 ⁰⁰	*39.....	\$162 ⁰⁰
3'	28.....	\$134 ⁰⁰	*44.....	\$182 ⁰⁰
4'	35.....	\$150 ⁰⁰	*68.....	\$205 ⁰⁰
6'	53.....	\$189 ⁰⁰	78.....	\$278 ⁰⁰
8'	66.....	\$226 ⁰⁰	97.....	\$304 ⁰⁰
10'	80.....	\$252 ⁰⁰	117.....	\$343 ⁰⁰
12'	93.....	\$278 ⁰⁰	146.....	\$414 ⁰⁰
14'	110.....	\$332 ⁰⁰	159.....	\$442 ⁰⁰
16'	123.....	\$380 ⁰⁰	178.....	\$506 ⁰⁰
18'	138.....	\$442 ⁰⁰	*199.....	\$575 ⁰⁰
20'	153.....	\$506 ⁰⁰	*220.....	\$658 ⁰⁰

*Built by Order Only - Not Stock Item!

Heavy Frame, Butt,
and Bottom Bar

Mounting Bracket of Your Choice Furnished With Gates



Wood Post
Round
Bracket



Flat Wall
Mount
T Bracket

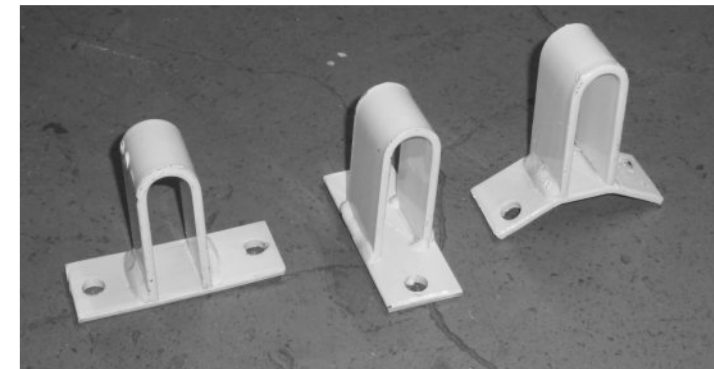


Square Post
Y
Bracket



Steel Pipe Post
Weld On
Bracket

All Mounting Brackets.....\$8⁵⁰ Ea.



Panel Loops.....\$4¹⁵ Each

Plank Mount (horizontal or vertical) or Round Post Mount



Weld On Loop
For Steel Post
\$1⁷⁵

Retractable Pull Pin

Can be added to
any gate when
you order
\$35⁰⁰



Posts

4 1/2" O.D. x 8' x 1/4" Wall

Steel Post.....\$145⁰⁰

2 7/8" O.D. x 8' x 1/4" Wall

Drill Stem Post.....\$106⁰⁰



Gate Latches

GL-3 (right) & GL-4 (left).....\$55⁰⁰

GL-2 Latch (both).....\$60⁰⁰



Gate Closers

For Wire Gates...
Will not drop gate if
wire breaks or hook
comes loose

\$25⁰⁰

Gates & Combos

High Tensile Strength Tubing

Arch Gates



32".....	Wt. 90 lbs.	\$387 ⁰⁰
4'.....	Wt. 105 lbs.	\$422 ⁰⁰
6'.....	Wt. 120 lbs.	\$458 ⁰⁰
8'.....	Wt. 135 lbs.	\$488 ⁰⁰
10'.....	Wt. 155 lbs.	\$515 ⁰⁰

We recommend standard weight CP-1 Gates only. X-Heavy gates by special order.

Transition Cage



Provides Ability to Sort Two Ways
\$1,230⁰⁰

Low Level Frame Gates



32".....	Wt. 92 lbs.	\$428 ⁰⁰	8'.....	Wt. 154 lbs.	\$535 ⁰⁰
4'.....	Wt. 107 lbs.	\$462 ⁰⁰	10'.....	Wt. 175 lbs.	\$568 ⁰⁰
6'.....	Wt. 132 lbs.	\$502 ⁰⁰			

Panel Gate Combo With Any Size Gate



10'.....	Wt. 191 lbs.	\$682 ⁰⁰	14'.....	Wt. 220 lbs.	\$746 ⁰⁰
12'.....	Wt. 202 lbs.	\$704 ⁰⁰	16'.....	Wt. 241 lbs.	\$856 ⁰⁰

- Build By Order Only -

"Easy Access"

Horse Handle

Our Horse Handles
can be added to any
gate.

\$63⁵⁰



260 to 325 Cow Corral Unit with 322 Feet of Panel Fence

Complete Corral Unit

Wt. 4,171 lbs.

\$17,599⁰⁰

Complete Corral Unit

Less Chute

Wt. 2,881 lbs.

\$8,428⁰⁰

Model A Portable

Chute with

Torsion Axle

Wt. 1,760 lbs.

\$9,171⁰⁰

Prices Do Not Include Panel Trailer

Price Includes

- 20 - 14' CP-2 Panels....@..... \$336⁰⁰
- 2 - 8' Arch Gates..... @..... \$488⁰⁰
- 1 - 32" Arch Gate.....@..... \$387⁰⁰
- 30 - CP-5 Pins.....@..... \$11⁵⁰
- 1 - Model A Chute....@..... \$9,171⁰⁰



Entire corral loads easily into 12' x 38" chute for easy transportation. Chute adjusts from 26 inches to 52 inches in height for ease in loading or unloading at any level. This chute is equipped with torsion axle, radial tires, fenders, mud flaps, tongue that swings sideways out of way, jack, built in rear gate, and extension hangers to allow a dozen extra panels or a working alley to be hauled. All stationary and portable chutes have the new Rumber flooring.



Stationary Loading Chute

18' Length

\$10,760⁰⁰



Bumper Hitch Panel Carrier.....\$6,972⁰⁰

Holds 40 Panels

Wt. 1,080 lbs.

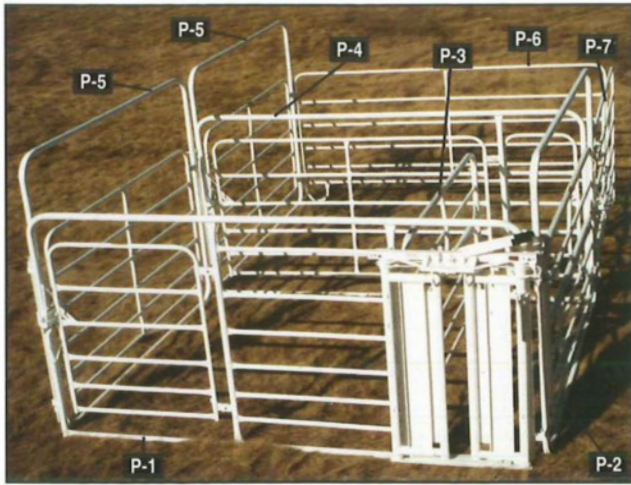
single axle



Gooseneck Panel Carrier.....\$11,025⁰⁰

With Tandem Axles - Holds 50 Panels

Build Your Own Alleyway



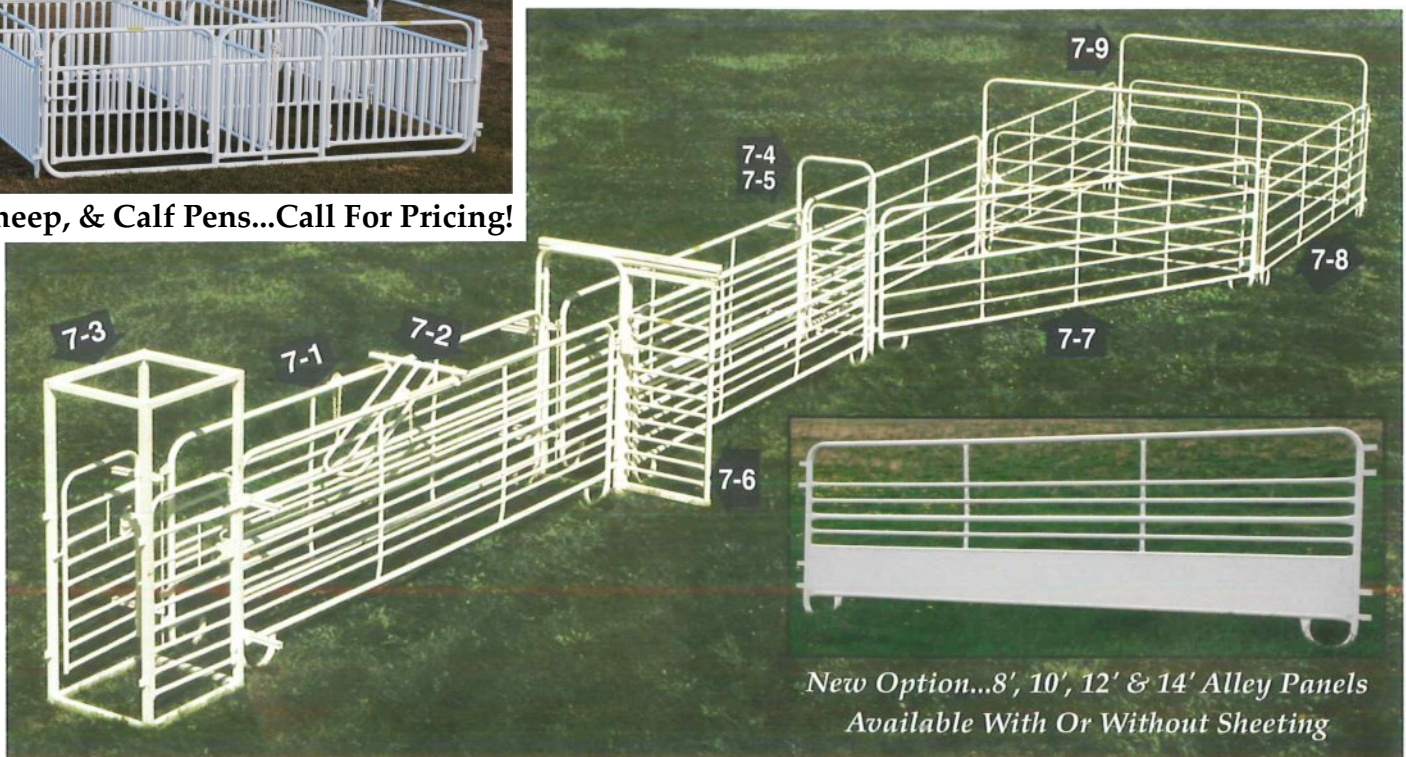
Portable Pulling Alley

P-1	Pearson Headgate w/11' Panel.....	\$1,960 ⁰⁰
P-2	7' 9" L.H. Nurse Gate in Arch.....	\$715 ⁰⁰
P-3	7' 9" Nurse Gate....(R.H.).....	\$515 ⁰⁰
P-4	11' Panel - With 2' Gate Instead of Head Catch.....	\$795 ⁰⁰
P-5	8' Arch Gate.....	\$488 ⁰⁰
P-6	11' Divider Panel.....	\$295 ⁰⁰
P-7	8' CP-2 Panel.....	\$236 ⁰⁰
	CP-5 Connector Pin.....	\$11 ⁵⁰

Select the panels you need to set up a pulling alley in the barn or out in your calving lot. Will fit in with all Daniels panels.



Hog, Sheep, & Calf Pens...Call For Pricing!



*New Option...8', 10', 12' & 14' Alley Panels
Available With Or Without Sheeting*

Figure 7-1 - 14' x 5' Alley Panel.....	Wt. 215 Lbs.	\$595 ⁰⁰
- 12' x 5' Alley Panel.....	Wt. 185 Lbs.	\$545 ⁰⁰
- 10' x 5' Alley Panel.....	Wt. 155 Lbs.	\$490 ⁰⁰
- 8' x 5' Alley Panel.....	Wt. 125 Lbs.	\$416 ⁰⁰
Figure 7-2 - No Back - (For Use With Portable Alley).....		\$210 ⁰⁰
Figure 7-3 - Palpation Cage.....	Wt. 170 Lbs.	\$940 ⁰⁰
Figure 7-4 - Adjustable Arch - (No Gate).....	Wt. 50 Lbs.	\$210 ⁰⁰
Figure 7-5 - Adjustable Arch with Side Hinge Gate.....	Wt. 75 Lbs.	\$500 ⁰⁰
Figure 7-6 - 32" Slide Adjustable Arch Gate.....		\$988 ⁰⁰
Figure 7-7 - 16' CP-2 Panel.....	Wt. 128 Lbs.	\$380 ⁰⁰
Figure 7-8 - 14' CP-2 Panel - (3 Shown).....	Wt. 112 Lbs.	\$336 ⁰⁰
Figure 7-9 - 10' Arch Gate.....	Wt. 155 Lbs.	\$515 ⁰⁰
Pearson Headgate - (Not Shown).....	Wt. 200 Lbs.	\$1,175 ⁰⁰
Pearson Adapter Arch - (Not Shown).....		\$385 ⁰⁰



White Continuous Fence

Pipe.....\$3⁰⁰ Per Foot - Per Pipe

Continuous Fence Pipe Lengths Are 24' 3" (Approximately \$72.75 Total)

3" Crimp On One End For Telescoping Connection

Corners.....\$7⁰⁰ Each

Starting & Ending Section.....\$32⁰⁰ Each

Livestock Feeding Items



Telescoping Bale & Loose Hay Feeder

The 7' x 14' sides work in as livestock eats. Ranchers say cattle waste much less hay with this feeder than others they use.

Panels can be used for portable corral panels in off season.

7' x 14' Rack Complete.....\$1,285⁰⁰

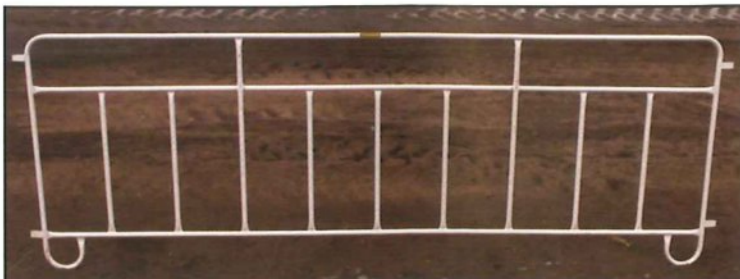
7' Panel Only.....\$240⁰⁰

10' Panel Only - By Order Only.....\$290⁰⁰

14' Panel Only.....\$405⁰⁰

16' Panel Only - By Order Only.....\$448⁰⁰

20' Panel Only - By Order Only.....\$575⁰⁰



14' Creep Feed Panel.....\$390⁰⁰

Windbreaks



From Windbreak...

- In Just 5 Minutes
- One Person
- No Tools
- No Bolts

To Shade!

In the tests we've run, this panel stops over 95% of the wind velocity and snow does not swirl over the top like a solid windbreak. Cattle will not drift away from protection.

- *Heat Flows Up Through Holes*
- *Stops 79% of Sun*

Stationary Windbreak Panel.....\$895⁰⁰
Bare Post.....\$200⁰⁰
Post With Shade Latch.....\$270⁰⁰

Cost of 60' Stationary Windbreak.....\$9,175⁰⁰
8 Panels in a 60' Section - Posts Included
Posts are 4 1/2" O.D. with 1/4" Wall



The outside frame of these panels is made of 1 1/2" x 3" x 14 gauge tube.
The 21% perforated sheets are 20 gauge galvanized-punched full of 1 5/8" holes and corrugated to 3".
Weight per 12' sheet is 54 lbs. - 7' x 12' complete panel weight is 225 lbs.



Portable Windbreak Panel.....\$845⁰⁰

The windbreak panel will hook-up to the Daniels livestock buildings and all of our portable livestock panels.
The windbreak panels can be set up in an open area or around a building for added protection.

Barns and Sheds

Calving Barns

*Tack Rooms Built In
On Request*



Size	Barn Bare Shelter	Barn With Gates & Panels	Barn Complete*
32' x 24' Totally Enclosed - 6 Pens.....	\$27,335 ⁰⁰	\$32,386 ⁰⁰	\$35,362 ⁰⁰
32' x 32' Totally Enclosed - 8 Pens.....	\$32,248 ⁰⁰	\$38,215 ⁰⁰	\$41,190 ⁰⁰
32' x 40' Totally Enclosed - 10 Pens.....	\$38,380 ⁰⁰	\$45,476 ⁰⁰	\$48,454 ⁰⁰
32' x 48' Totally Enclosed - 12 Pens.....	\$43,755 ⁰⁰	\$52,026 ⁰⁰	\$55,005 ⁰⁰
32' x 56' Totally Enclosed - 14 Pens.....	\$50,678 ⁰⁰	\$60,000 ⁰⁰	\$62,976 ⁰⁰



Calf Sheds and Loafing Barns

Size	Barn Bare Shelter	Barn With Gates & Panels	Barn Complete*
12' x 24' Open Front - 3 Pens.....	\$10,738 ⁰⁰	\$13,080 ⁰⁰	\$16,059 ⁰⁰
12' x 32' Open Front - 4 Pens.....	\$12,850 ⁰⁰	\$16,116 ⁰⁰	\$19,044 ⁰⁰
12' x 40' Open Front - 5 Pens.....	\$15,571 ⁰⁰	\$19,573 ⁰⁰	\$22,552 ⁰⁰
12' x 48' Open Front - 6 Pens.....	\$17,999 ⁰⁰	\$22,770 ⁰⁰	\$25,951 ⁰⁰
12' x 56' Open Front - 7 Pens.....	\$19,684 ⁰⁰	\$26,588 ⁰⁰	\$29,567 ⁰⁰

***Complete Barn Package** - Includes pulling alley made up of Pearson automatic headgate, 2 nurse panels, and 2 special divider panels with extra gates. This package is \$2,900⁰⁰ over and above the price of any barn equipped with gates and panels.

These panels are specifically designed for calving barns.



Pearson Headgate w/11' Panel.....	\$1,960 ⁰⁰
11' Panel.....	\$795 ⁰⁰
With 28" Gate Instead of Head Catch	
11' Divider Panel.....	\$295 ⁰⁰



C-Section Nurse Gate	Wt. 140 lbs.	\$715 ⁰⁰
7' 9" L.H. Nurse Gate	Wt. 130 lbs.	\$515 ⁰⁰
<i>For Calving Barns - Bottom Folds Up Out of the Way</i>		
10' Nurse Gate.....	Wt. 120 lbs.	\$655 ⁰⁰
7' 9" L.H. Nurse Gate in Arch	Wt. 135 lbs.	\$715 ⁰⁰

Left & Right Hand Nurse Gates Available

Barns and Buildings



New Calf Barn with Windbreak Panels

*Windbreaks fold right up to the building. Extended windbreaks give a total of 56' of wind block!
Call for Pricing of Buildings with Windbreak Panels*

The Thoroughbred Horse Shelter

Designed for horse shelter. 12' x 24' including 4' overhang. 8' 7" Back Wall & 11' 1" Peak

12' x 12' Pen			8' x 12' Pen		
Size	Bare	Gate & Panel	Size	Bare	Gate & Panel
16' x 12' Open Front - 1 Pen.....	\$8,136 ⁰⁰	\$9,639 ⁰⁰	16' x 24' Open Front - 3 Pens.....	\$13,195 ⁰⁰	\$15,638 ⁰⁰
16' x 24' Open Front - 2 Pens.....	\$13,128 ⁰⁰	\$15,541 ⁰⁰	16' x 32' Open Front - 4 Pens.....	\$15,054 ⁰⁰	\$17,823 ⁰⁰
16' x 36' Open Front - 3 Pens.....	\$18,096 ⁰⁰	\$22,411 ⁰⁰	16' x 40' Open Front - 5 Pens.....	\$19,866 ⁰⁰	\$23,545 ⁰⁰
16' x 48' Open Front - 4 Pens.....	\$23,071 ⁰⁰	\$27,340 ⁰⁰	16' x 48' Open Front - 6 Pens.....	\$23,237 ⁰⁰	\$28,123 ⁰⁰
			16' x 56' Open Front - 7 Pens.....	\$26,243 ⁰⁰	\$32,653 ⁰⁰



Garages
All specially built.
Prices on Request



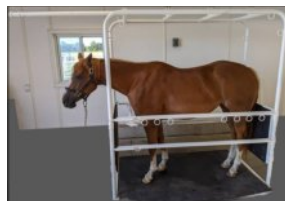
Horse Barn
Specifically built to your
sizes and needs.
Prices on Request



Daniels Horse Stocks

Daniels Manufacturing Co. horse stocks are designed to help keep you and your horse calm and comfortable. They can be built custom to fit your needs.

Prices on Request



Windmill Items - Clothes Line - Sprinklers



Windmill Towers

16' Windmill Tower - Includes Platform, Crown, Shutoff, & Anchors	\$1,548⁰⁰
24' Windmill Tower - Includes Platform, Crown, Shutoff, & Anchors	\$1,855⁰⁰
Windmill Platforms	\$175⁰⁰
Windmill Crowns	\$144⁰⁰
10' Windmill Adapter	\$175⁰⁰
Split Platform	\$238⁰⁰

Pump Rods



Will Fit Aermotor Mills

Easy Slack Adjustment, Sealed Swivel - Greased Fitted

6' Mill - Standard Length	\$70⁰⁰
8' Mill - Standard Length	\$78⁰⁰
6' Mill - 2' Longer Than Regular Length	\$82⁰⁰
8' Mill - 2' Longer Than Regular Length	\$90⁰⁰



Windmill Shut Off Levers

Furnished With Daniels Towers Or Will Mount On Any
Tower
\$38⁰⁰



Clothes Line.....\$550⁰⁰

All Lines Tighten Evenly

8' x 12' = 120' Of Line



Sprinklers

The Only Sprinkler You'll Ever Have to Buy

- Hot Dip Galvanized Steel
- Heavy Brass Hose Fitting
- Senninger Standard-Angle Wobbler Sprinkler Head
- Will Put 1/2" of Water on 50' in 5 Hours at 35 PSI

Red Short

\$50⁰⁰

Red Medium

\$60⁰⁰

Red Tall

\$75⁰⁰



AH

All Hydraulic Squeeze Chute

Due to the daily rising costs for iron and parts, please contact us for pricing and options available.

Available Styles:

Feedlot Style Squeeze Chute

Stationary Squeeze Chute

Portable Squeeze Chute

Features Include:

- Neck Stretcher for tagging, dehorning, checking teeth, doctoring eyes, etc.
- Sternum Support so cattle can't go down (Adjustable and Removable)
- Built in Palpation Cage with gas springs on gates (No latches to rattle)(10' only)
- Mounting Brackets for attachment of scales
- Special Traction floor with offset 1 1/4" solid round to avoid slipping
- 8-Bolt Hub and Wheel for portable model
- Hip Squeeze for A-I and Preg Checking (Adjustable and Removable) Option Only



10' Feedlot Style AH Stationary Squeeze Chute



*10' AH Portable Squeeze Chute
Entire Chute Measures 11' 8 1/2" Long*



**18 Month
Limited Warranty
on All AH All
Hydraulic Squeeze
Chutes**

New Improved Neck Stretcher!



8' and 10' AH Squeeze Chute Inside Measurements

- Inside frame measures 6' 4" Tall
- Squeeze adjusts from 9 1/2" to 33"
- From Headgate to front of PP gate 92"
- Headgate closes to 4" and opens to 32"
- Sternum support adjusts from 11" to 20" in height
- 20" Opening for shoulder branding & neck vaccinating



Hydraulic Power Units *Stationary or Portable*

Power Unit Options:

Electric - Open Center

Electric - Closed Center

Gas - Open Center

Prices on Request

Control Options:

*Standard spool valves included in base price

*Electric valves with hard-wired control or radio control.



Call For Pricing on Electric Over Hydraulic

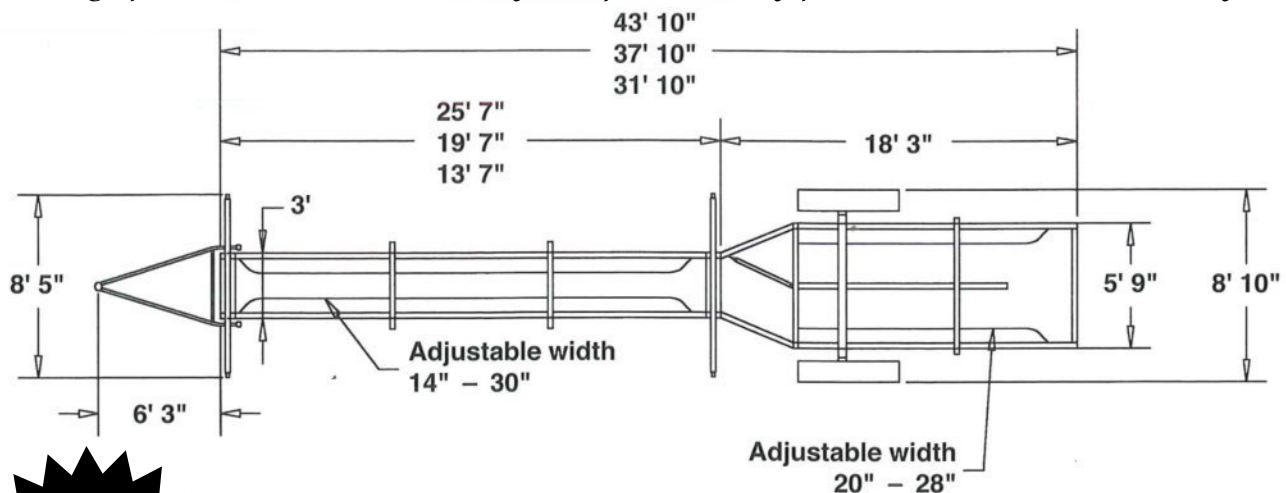
Portable Alleyway

Our Portable Alleyway is the fastest, easiest, and safest way to process cattle in a straight line!



Available Lengths: 32' 38' 44'

The latest version of our Portable Alley features a side swing gooseneck hitch for quick and easy setup. It also includes no-backs and side squeezes that are adjustable and undated heavy duty spring loaded jacks that operate simultaneously. With the addition of brass bushings to hinge points, this is undoubtedly the quietest alley produced in the market today!



**New
Quieter
Operation!**

All hinge points and moving parts now have oil impregnated brass bushings to reduce noise levels and increase longevity!

Stationary Alleyway



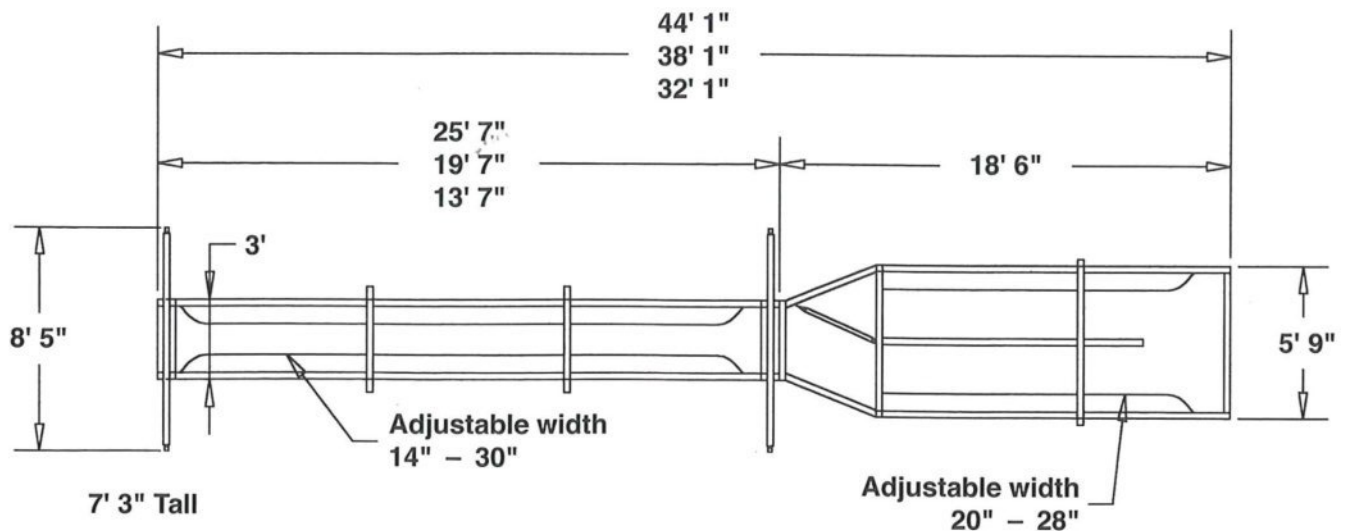
Our Stationary Alleyway is the fastest, easiest, and safest way to process cattle in a straight line!

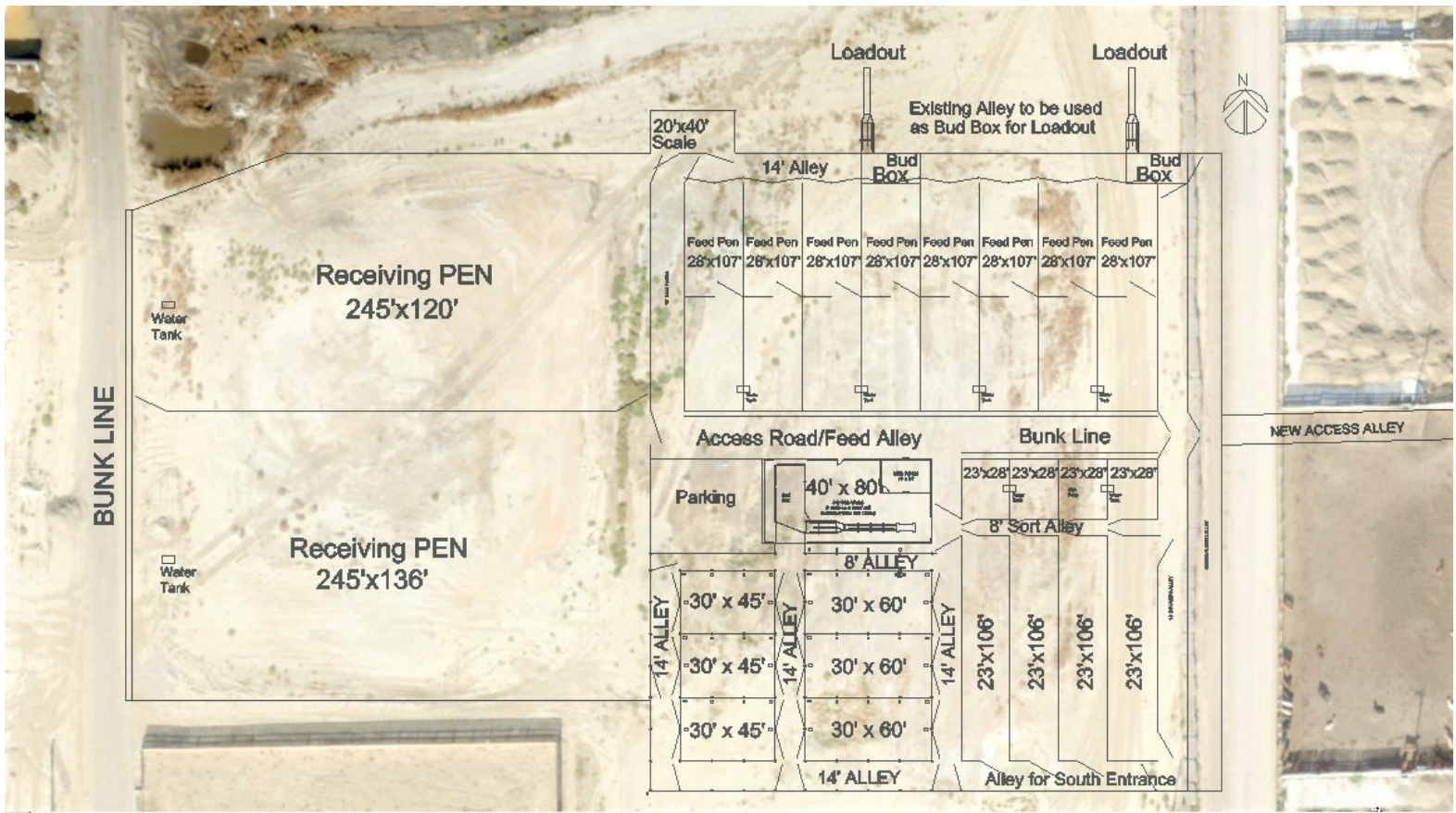
Available Lengths: 32' 38' 44'

Optional Alleyway Equipment

Headgate (No Slide Gate).....	\$1,468⁰⁰	Palpation Cage (Stationary Only).....	\$1100⁰⁰
Back Gate in Alley (Not Shown).....	\$415⁰⁰	Travel Lights (Portable Only).....	\$610⁰⁰
Portable Bud Box For Alleyway	\$4,680⁰⁰		

Call For Prices On Converting Alleys To Hydraulic Operation!





Daniels Manufacturing Company Low Stress Facility Design

Daniels Manufacturing Co. designs custom facilities for Feedlots, Vet Clinics, and Cow/Calf Operations. We focus our designs on the natural flow of the cattle to achieve low stress for the cattle and the user. No matter the size of the operation, we can custom design your facility to help keep you and your cattle healthy.

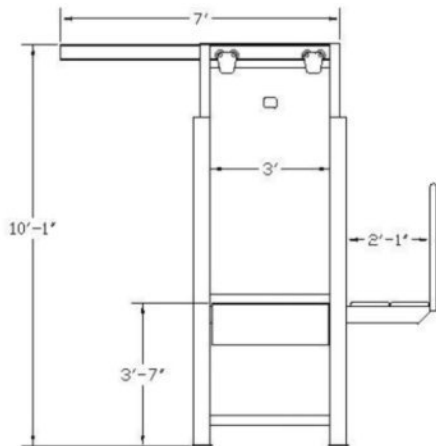
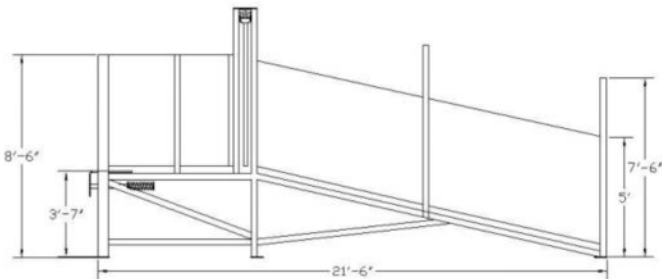


Feedyard Duty Loading Chute



We have taken the Daniels reputation for durability and reliability to the feeding industry with our new chute. This chute features a wider catwalk, side access door on the top deck, sliding gate at the top of the ramp, and a heavy duty, spring loaded bump plate. This chute utilizes Rumber flooring for greater grip and less chance of injury. We believe that this chute is built to handle many years of heavy duty use and as always comes with our 100% satisfaction guarantee.

Daniels Manufacturing Co.



Loading Chute

\$22,590⁰⁰

Double Alley Back For Loading Chute

\$6,500⁰⁰

Portable Bud Box

\$4,680⁰⁰

Stationary Bud Box

\$8,575⁰⁰





Side Exit Alley

Pricing on Request
10' Single Alley

Options Available

Headgate
Palpation Cage
Slide Gate

Load Out Transition

Designed For Semi and
Horse Trailer Load Out

Pricing on Request

Also Available...

Adjustable Transition

For Processing!

Pictured In Front of Big Red Loading Chute



Sorting Alleys

Can either be manual,
hydraulic, or electric over
hydraulic.

*Unlimited Exits For
Sorting Alley Options!*

Pictured is a Five-Way Sorting Alley

K-State Facility

This complete research livestock facility was built for the Kansas State University during the summer of 2009. Daniels Manufacturing Co. and Dr. Kip Lukasiewicz designed and manufactured all equipment used in this facility.

The building was designed by Daniels Manufacturing Co. and installed by Green Gable Contracting. The K-State Facility covers 10 acres.



Be Sure to Visit Our

North Display Lot

Located Along
Highway 20 in Ainsworth, Nebraska

